

PGA-1500 Straightener



- *Simple-to-use electrically powered bench-top system quickly straightens PGAs up to 21 x 21 pin arrays*
- *No additional tooling required. Changeover accomplished in seconds with simple dial and knob adjustments.*
- *Pin-to-pin .005 accuracy, non-accumulative.*

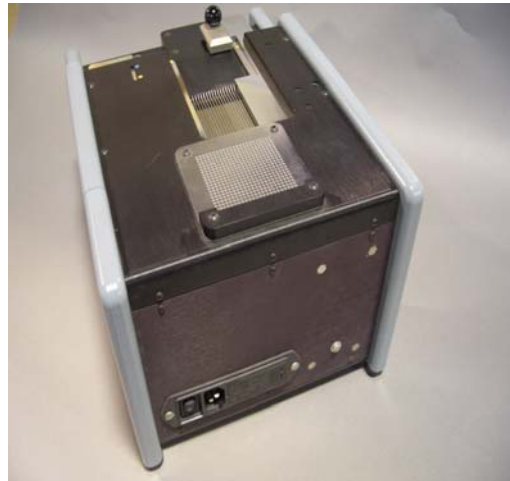
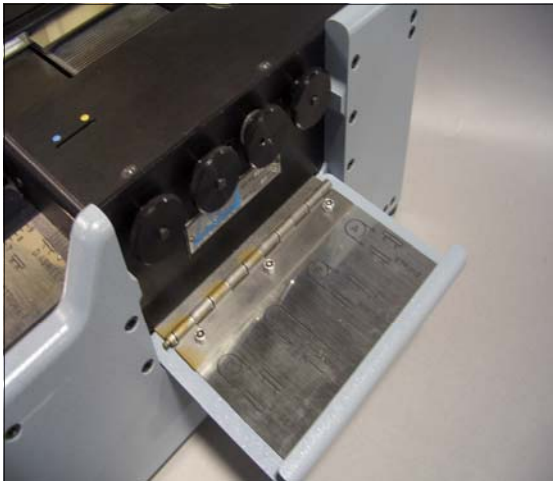
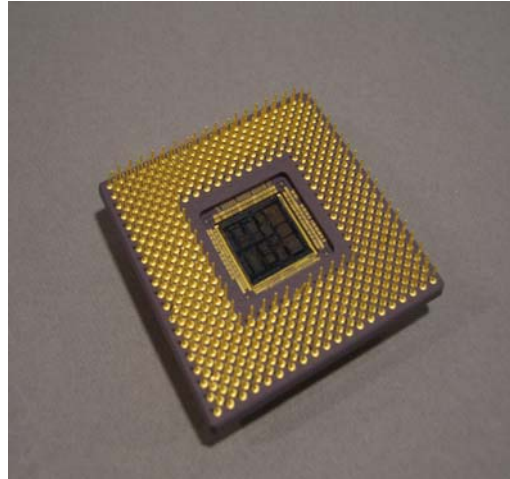
PGA-1500 Straightener:

Now there is a fast, failsafe way to properly straighten virtually every commonly used PGA. Another proud accomplishment of ATM engineering, the versatile PGA-1500 accepts any PGA device up to 21 x 21. And since there is no die change and set up, time is minimal. PGAs can be processed interchangeably and in random sequence.

Operation is quick, precise and simple. Merely requiring the operator to set a maximum of four adjustments. All electric and weighing just 26 1/2 lbs., the PGA -1500 is easily transportable.

PGA-1500 Straightner

- Cycle time: 2.4 seconds approximately
- Power requirements: 90-240 VAC, 50/60 Hz,.
- Weight: 26.5 lbs (12kg) Dimensions (H x W x D): 6.75 x 8.75 x 12.75 inches (172 x 222 x 314 mm)



American Tech Manufacturing, Inc
71 Daggett Drive
San Jose CA 95134
Tel: (408) 416-2400
Fax: (408) 416-2410
www.Americantech.com